



Oklahoma  
CHAPTER

# OKLAHOMA ACC ANNUAL SCIENTIFIC SESSION

SATURDAY, APRIL 23, 2022  
HILTON GARDEN INN - OKLAHOMA CITY, OK

THIS CONFERENCE FEATURES RENOWNED SPEAKERS FROM OKLAHOMA AND OUTSIDE WHO WILL DISCUSS  
NON INVASIVE IMAGING IN CORONARY SYNDROMES-NEW MULTI-SOCIETY RECOMMENDATIONS,  
FEMALE-SPECIFIC FACTORS THAT INFLUENCE A WOMAN'S CV RISK ACROSS THE LIFESPAN, NEW GUIDELINES FOR HYPERTROPHIC  
CARDIOMYOPATHY, MECHANISMS OF EXERCISE LIMITATION IN HFrEF, AND INTEGRATED CARE FOR ATRIAL FIBRILLATION  
EDUCATION GEARED TO THE ENTIRE CARDIOVASCULAR CARE TEAM EARN UP TO 3.75 AMA PRA CATEGORY 1 CREDITS™



KEYNOTE SPEAKER:

MALISSA WOOD, M.D., F.A.C.C.  
ACC BOARD OF GOVERNORS-CHAIR  
CO-DIRECTOR, CORRIGAN WOMEN'S HEART HEALTH  
PROGRAM  
MASSACHUSETTS GENERAL HOSPITAL  
BOSTON, MA

JOINTLY PROVIDED BY:

THE AMERICAN COLLEGE OF CARDIOLOGY FOUNDATION  
AND THE OKLAHOMA CHAPTER OF  
THE AMERICAN COLLEGE OF CARDIOLOGY

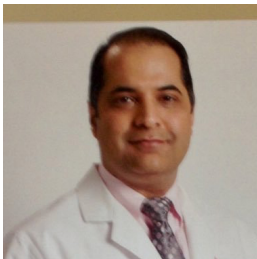
REGISTER ONLINE NOW: [WWW.OKACC.ORG](http://WWW.OKACC.ORG)

# 2022 ANNUAL SCIENTIFIC MEETING

## AN INVITATION TO OUR COLLEAGUES



**C.A. SIVARAM,  
M.D., F.A.C.C.**  
ANNUAL SCIENTIFIC SESSION  
PROGRAM CHAIR



**SANJEEV TREHAN,  
M.D., F.A.C.C.**  
CHAPTER PRESIDENT; MEMBER,  
ACC BOARD OF GOVERNORS

You are cordially invited to attend the 2022 Oklahoma Chapter of the American College of Cardiology (OKACC) Annual Scientific Meeting on Saturday, April 23, 2022. This exciting program features speakers from both Oklahoma and around the country. Please plan to attend this session, which provides a great opportunity to earn up to 3.75 *AMA PRA Category 1 Credits™*, and 3.75 MOC Credits, to listen to nationally noted speakers, to network with cardiac care providers from diverse communities within the state, and to get to know cardiology fellows-in-training.

### STATEMENT OF NEED:

Cardiovascular science is constantly evolving, with both new discoveries and new therapies being published each year. This educational activity will provide the cardiovascular professional team with an update on a selected number of high-priority items identified from environmental scanning, with discussion of both the science and evidence behind current recommendations.

Topics emphasized at this session will include: Non-Invasive Imaging in Coronary Syndromes-New Multi-Society Recommendations; Female-Specific Factors that Influence a Woman's Lifespan; Management of Hypertrophic Cardiomyopathy in 2022; Mechanisms of Exercise Limitation in Heart Failure with Preserved Ejection Fraction; and Integrated Care of Atrial Fibrillation.

This is a great opportunity to bring your whole team for a day of great professional development.

The ACC is our professional association, and each of you, as Oklahoma ACC members, are key components of our state Chapter. We ask that you and your colleagues attend this very important and informative meeting.

## 2022 PLANNING COMMITTEE

### Program Chair & Moderator

C.A. Sivaram, M.D., F.A.C.C.  
David Ross Boyd Professor  
& Vice Chief for Education  
and Training, Cardiovascular  
Section, Associate Dean,  
Continuing Professional  
Development, Vice Chair of  
Medicine for Undergraduate  
Medical Education, University  
of Oklahoma Health Sciences  
Center

### Governor-OKACC

Sanjeev Trehan, M.D., F.A.C.C.  
Cardiologist, Tulsa, OK

### Early Career Member

Tarun Dasari, M.D., F.A.C.C.  
Associate Professor of Medicine,  
University of Oklahoma Health  
Sciences Center

### Fellow in Training

Mohamad Khattab, D.O.  
University of Oklahoma Health  
Sciences Center

### Chapter Executive

Beth Quick-Andrews, C.A.E.  
Oklahoma ACC

## OKLAHOMA ACC'S PURPOSE

Our purpose is to contribute to the prevention of cardiovascular diseases, to ensure optimal quality of care for individuals with such diseases, and to foster the highest professional ethical standards.

## OVERALL GOAL

This Scientific Session will address the skills required of cardiovascular professionals in order to provide evidence-based care to patients with cardiovascular disease.

## OVERALL DESCRIPTION

This annual meeting is an exciting program that will highlight world-class faculty discussing up-to-date information about drugs and technologies that are indicated in a variety of common cardiovascular diseases. The content will be oriented toward the entire cardiac care team. The educational objectives of the session will address the skills required of cardiovascular professionals for providing evidence-based care to patients with cardiovascular disease. The intimate format of this meeting will allow the audience to interact with invited speakers, network with colleagues from across the state, and meet the cardiology fellows-in-training within the state.

## TARGET AUDIENCE

Adult Cardiologists, Pediatric Cardiologists, Cardiothoracic Surgeons, Cardiology Fellows-in-Training, the entire Cardiac Care Team, including but not limited to: Nurses, Nurse Practitioners, Clinical Nurse Specialists, Physician Assistants, Pharmacists.

# 2022 ANNUAL SCIENTIFIC MEETING

## SCHEDULE OF EVENTS

### SCHEDULE OF EVENTS & SPEAKERS

*Subject To Change*

7:30 A.M.	Registration and Continental Breakfast Visit Poster Session and Exhibits
7:55 A.M.	Welcome and Housekeeping C.A. Sivaram, M.D., F.A.C.C. Program Chair & Moderator
8:00 A.M.	Non-Invasive Imaging in Coronary Syndromes: New Multi-Society Recommendations Federico M. Asch, M.D., F.A.C.C.
8:40 A.M.	Female-Specific Factors that Influence a Woman's CV Risk Across the Lifespan Erin Michos, M.D., M.H.S., F.A.C.C., F.A.H.A., F.A.S.E., F.A.S.P.C.
9:20 A.M.	Refreshment Break, Visit Poster Session and Exhibits
9:35 A.M.	Management of Hypertrophic Cardiomyopathy in 2022 Steve Ommen, M.D., F.A.C.C., F.A.H.A.
10:20 A.M.	Mechanisms of Exercise Limitation in Heart Failure with Preserved Ejection Fraction Marat Fudim, M.D., M.H.S.
11:00 A.M.	Refreshment Break, Visit Poster Session and Exhibits
11:10 A.M.	ACC Update Malissa Wood, M.D., F.A.C.C., ACC Board of Governors Chair (AMA PRA Category 1 Credit™ is not provided for this session.)
11:55 A.M.	Governor's Report Sanjeev Trehan, M.D., F.A.C.C. (AMA PRA Category 1 Credit™ is not provided for this session.)
12:15 P.M.	Lunch and visit Poster Session and Exhibits
12:25 P.M.	Integrated Care for Atrial Fibrillation Zain Asad, M.D., M.S., F.A.C.C. Early Career Showcase
12:55 P.M.	Conclusion and Prizes C.A. Sivaram, M.D., F.A.C.C.

### LEARNING OBJECTIVES

1. Review the pros and cons of various imaging modalities and their role in decision-making in CAD.
2. Evaluate the female-specific factors that increase CVD risk in women throughout the lifespan (early menarche, PCOS, pregnancy, and early menopause).
3. Apply the step-wise care for symptomatic obstructive HCM and review SCD risk assessment based on the recent ACC HCM Guidelines.
4. Review the key contributors to exercise performance, and the current and future therapies for HFpEF.
5. Describe the components of an integrated healthcare delivery model for treatment of AF and contrast its outcome with traditional healthcare delivery models for treatment of AF.

### ACCREDITATION STATEMENT

In support of improving patient care, this activity has been planned and implemented by the American College of Cardiology Foundation and the Oklahoma Chapter of the American College of Cardiology. The American College of Cardiology Foundation is jointly accredited by the Accreditation Council for Continuing Medical Education (ACCME), the Accreditation Council for Pharmacy Education (ACPE), and the American Nurses Credentialing Center (ANCC), to provide continuing education for the healthcare team.

#### Physicians

The American College of Cardiology Foundation designates this live activity for a maximum of 3.75 AMA PRA Category 1 Credits™. Physicians should claim only the credit commensurate with the extent of their participation in the activity.



JOINTLY ACCREDITED PROVIDER™  
INTERPROFESSIONAL CONTINUING EDUCATION

#### MOC

Successful completion of this CME activity, which includes participation in the evaluation component, enables the participant to earn up to 3.75 Medical Knowledge MOC points in the American Board of Internal Medicine's (ABIM) Maintenance of Certification (MOC) program. Participants will earn MOC points equivalent to the amount of CME credits claimed for the activity. It is the CME activity provider's responsibility to submit participant completion information to ACCME for the purpose of granting ABIM MOC credit.



# 2022 ANNUAL SCIENTIFIC MEETING

## INVITED FACULTY

### LEARNER BILL OF RIGHTS

The American College of Cardiology Foundation (ACCF) recognizes that you are a life-long learner who has chosen to engage in continuing medical education to identify or fill a gap in knowledge or skill; and to attain or enhance a desired competency. As part of ACCF's duty to you as a learner, you have the right to expect that your continuing medical education experience with ACCF includes the following.

#### Content that:

- Promotes improvements or quality in healthcare
- Is current, valid, reliable, accurate and evidence-based
- Addresses the stated objectives or purpose
- Is driven and based on independent survey and analysis of learner needs, not commercial interests
- Has been reviewed for bias and scientific rigor
- Offers balanced presentations that are free of commercial bias
- Is vetted through a process that resolves any conflicts of interest of planners and faculty
- Is evaluated for its effectiveness in meeting the identified educational need

#### A learning environment that:

- Is based on adult learning principles that support the use of various modalities
- Supports learners' abilities to meet their individual needs
- Respects and attends to any special needs of the learners
- Respects the diversity of groups of learners
- Is free of promotional, commercial and/or sales activities

#### Disclosure of:

- Relevant financial relationships that planners, teachers and authors have with commercial interests related to the content of the activity
- Commercial support (funding or in-kind resources) of this activity

### ACC PRESIDENTIAL TEAM MEMBER:

Malissa Wood, M.D., F.A.C.C.  
ACC Board of Governors-Chair  
Associate Professor of Medicine  
Harvard Medical School  
Co-Director, Corrigan Women's Heart Health Program  
Massachusetts General Hospital  
Boston, MA

### SPEAKERS:

Federico Asch, M.D., F.A.C.C.  
Professor of Medicine  
Director, Cardiovascular Core Labs  
Director, Cardiac Imaging Research  
MedStar Health Research Institute  
MedStar Heart and Vascular Institute  
Georgetown University  
Washington, D.C.

Marat Fudim, M.D., M.H.S.  
Assistant Professor of Medicine  
Advanced Heart Failure  
Duke Cardiology  
Durham, NC

Erin Michos, M.D., M.H.S., F.A.C.C., F.A.H.A., F.A.S.E., F.A.S.P.C.  
Associate Professor of Medicine  
Associate Director of Preventive Cardiology  
Division of Cardiology  
Johns Hopkins University School of Medicine  
Baltimore, MD

Steve Ommen, M.D., F.A.C.C., F.A.H.A.  
Director, Hypertrophic Cardiomyopathy Clinic  
Mayo Clinic  
Rochester MN

### Early Career Showcase

Zain Ul Abideen Asad, M.D., M.H.S., F.A.C.C.  
Assistant Professor of Medicine  
Cardiovascular Section  
University of Oklahoma Health Sciences Center  
Oklahoma City, OK

# 2022 ANNUAL SCIENTIFIC MEETING

## GENERAL INFORMATION

### ACKNOWLEDGEMENT OF COMMERCIAL AND IN-KIND SUPPORT

Commercial support is financial, or in-kind, contributions given by a commercial interest, which is used to pay all or part of the costs of a CME activity. A commercial interest is any entity producing, marketing, re-selling, or distributing health care goods or services consumed by, or used on, patients.

At the time of printing, a complete listing of supporters was not available. Appropriate acknowledgement of all commercial and in-kind support will be given at the time of the educational activity.

### DISCLOSURE/CONFLICT OF INTEREST STATEMENT

As a provider jointly accredited by the Accreditation Council for Continuing Medical Education (ACCME), the Accreditation

Council for Pharmacy Education (ACPE), the American Nurses Credentialing Center (ANCC), and the American College of Cardiology Foundation (ACCF) must ensure balance, independence, objectivity and scientific rigor in all of their directly provided or jointly provided/co-provided educational activities. Planners, presenters and other contributors in a position to control the content are required to disclose to the audience all relevant financial relationships he/she and/or his/her spouse or domestic partner may have, occurring within the past 24 months, with any entity producing, marketing, re-selling, or distributing health care goods or services consumed by, or used on, patients. When an unlabeled use of a commercial product or an investigational use not yet approved for any purpose is discussed during an educational activity, the contributor should disclose that the product is

not labeled for the use under discussion or that the product is still investigational.

ACCF is committed to providing its learners with high-quality activities and materials that promote improvements and quality in health care and not a specific proprietary business or commercial interest. The intent of this disclosure is not to prevent participation in educational activities by persons with a financial or other relationship, but rather to provide learners with information on which they can make their own determination whether financial interests or relationships may influence the education activity.

ACCF assesses conflicts of interest (COI) with its faculty, planners, managers, staff and other individuals who are in a position to control the content of certified activities. All relevant potential conflicts of interest that are identified are

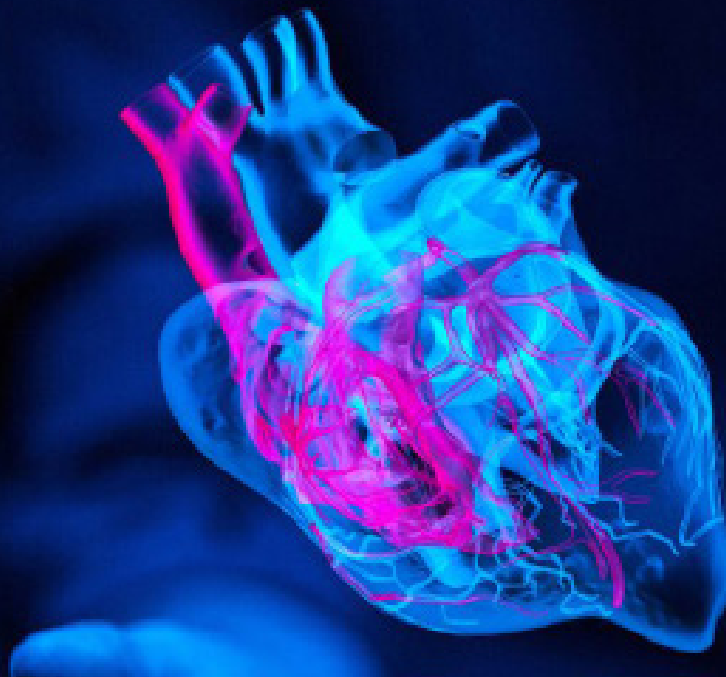
thoroughly vetted by course directors, ACCF education staff, and members of the Accreditation Compliance Workgroup (ACWG) through a process that includes appropriate peer review for fair balance, scientific objectivity and validity, and patient care and safety recommendations.

ACCF has taken the necessary steps to ensure that all relevant financial relationships have been mitigated.

Please note ACCF staff and the ACWG members involved with this activity have nothing to disclose.

### ACCOMMODATIONS STATEMENT

Accommodations are available by contacting Beth Quick-Andrews, C.A.E., at (314) 416-2240 or [okacc@qabs.com](mailto:okacc@qabs.com) as soon as possible.





# 2022 ANNUAL SCIENTIFIC MEETING REGISTRATION

## LOCATION

Hilton Garden Inn-Oklahoma City Bricktown  
328 E. Sheridan  
Oklahoma City, OK 73104

## HOTEL ACCOMODATIONS

We have arranged for a block of hotel rooms at a rate of \$189.00 per night. Please contact the hotel at (405) 270-0588 and ask for the 2022 Oklahoma ACC Scientific Session to receive the group rate.

## PARKING

Valet Parking is available at the hotel for \$25.00.

## REGISTRATION POLICIES

- Your full payment in advance completes your registration and ensures enrollment in this course.
- Course fee includes CME credits and meals.
- Cancellations must be received in writing by April 10, 2022 in order to receive a full refund. No refunds will be issued after April 10, 2022.

## WAYS TO REGISTER

- Online (Highly Recommended): Secure online registration is available at: [www.okacc.org](http://www.okacc.org)
- Mail: Complete this form with payment and mail to:  
Oklahoma ACC  
2650 S. Hanley Rd., Ste. 100  
St. Louis, MO 63144
- Phone: 314-416-2240
- Fax: Complete this form with payment information and fax to: 314-416-2240
- Questions: [okacc@qabs.com](mailto:okacc@qabs.com)

## FOR FURTHER COURSE INFORMATION

ACC Oklahoma Chapter, Beth Quick-Andrews, C.A.E.  
P: (314) 416-2240 F: (314) 845-1891  
e-mail: [OKACC@qabs.com](mailto:OKACC@qabs.com)

## REGISTRATION AND CME CREDIT FEES

ACC Members (Physicians and CV Team Members) \$25.00  
Non ACC Members (Physicians and CV Team Members) \$95.00  
Fellow in Training: No Charge

## REGISTRATION

\_\_\_\_\_  
First Name          Initial          Last Name          Degree

\_\_\_\_\_  
ACC Member ID #

\_\_\_\_\_  
NPI #

\_\_\_\_\_  
Specialty

\_\_\_\_\_  
Address

\_\_\_\_\_  
City                                  State                                  Zip

\_\_\_\_\_  
Cell Phone (required)

Please provide an email address that you will be able to access. You will use this address to complete your evaluation and print your CME certificate.

\_\_\_\_\_  
E-Mail Address

## PAYMENT INFORMATION

Total Amount Enclosed \$ \_\_\_\_\_

Payment Method:

- Check: Check Number: \_\_\_\_\_
- Credit Card: (Visa, MasterCard, or Discover)  
Credit card payments are accepted online or by calling the OKACC office, 314-416-2240, Monday-Friday 8 a.m.-5 p.m. excluding holidays.